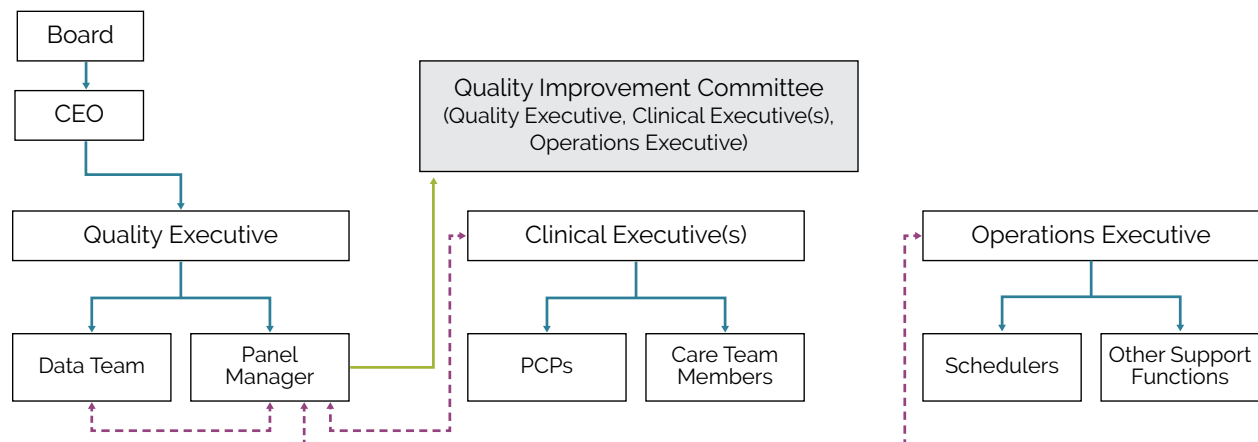


# EMPANELMENT RESOURCE 2: SAMPLE ORGANIZATIONAL CHART AND EMPANELMENT DEFINITIONS

Empanelment crosses domains and the person responsible (listed below as “Panel Manager”) could report to a different executive. However, a direct connection with the data team can be beneficial because many job functions are data intensive/ data dependent. In addition, reporting through quality executive structurally defines empanelment as an essential quality function.

There are, of course, many ways to structure oversight of empanelment. Some practices, particularly those that are smaller, may not have similar roles or staffing that reflect figure 2.1 below, with roles often embedded in other positions. This is intended as a sample only.

**FIGURE 2.1: POTENTIAL REPORTING AND WORK RELATIONSHIPS FOR PANEL MANAGER**



**FIGURE 2.2: SUGGESTED DEFINITIONS AND USE OF WORDS FOR EMPANELMENT**

